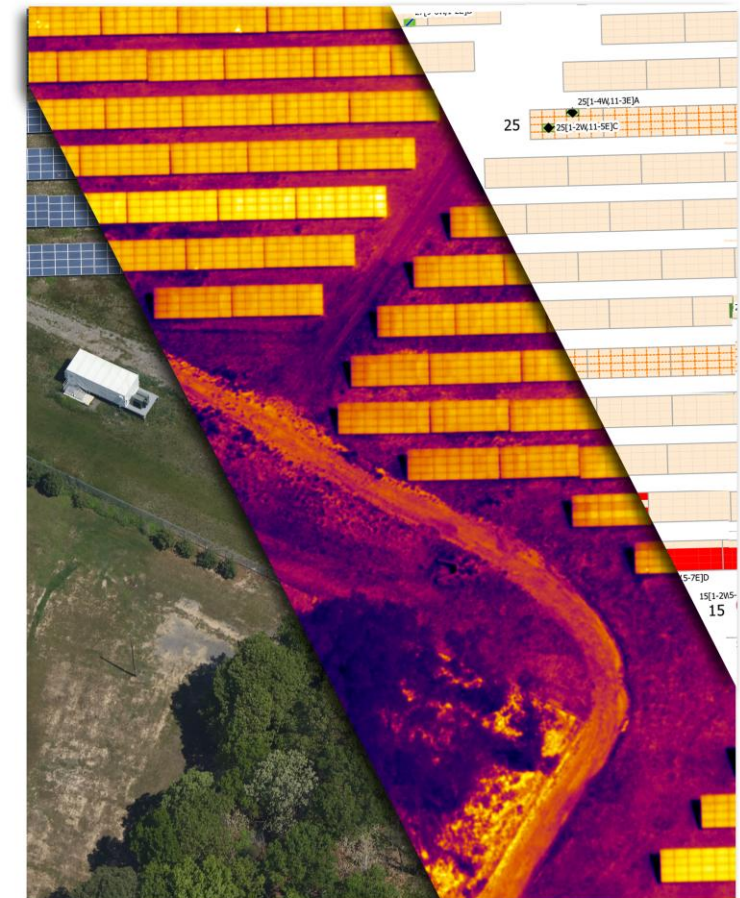
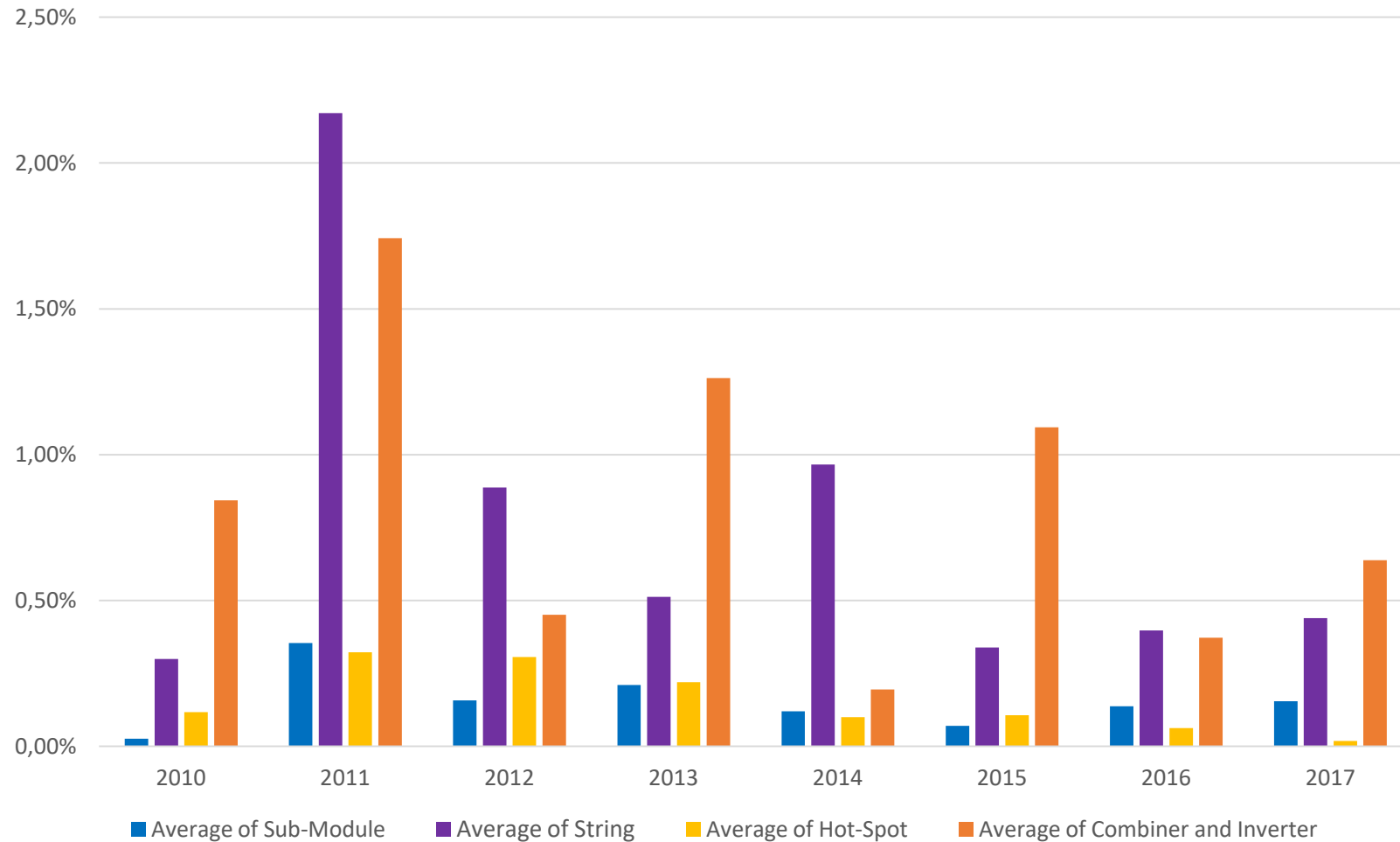




### 6GW dataset

This dataset is derived from a subset of projects which Heliolytics has inspected and received permission for analysis. Data is filtered for sites with <20% aggregate fault level and for sites with a size >5MW

Fault versus Year of Construction





### 6GW dataset

This dataset is derived from a subset of projects which Heliolytics has inspected and received permission for analysis. Data is filtered for sites with <20% aggregate fault level and for sites with a size >5MW

#### Faults versus Quarter of Installation

